



BIRGIT

Merging data having different LODs
April 2025



Co-funded by
the European Union

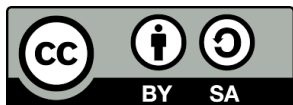
Merging data having different LODs

vlado.cetl@unin.hr

sanja.samanovic@unin.hr

danko.markovinovic@unin.hr

olga.bjelotomic.orsulic@unin.hr

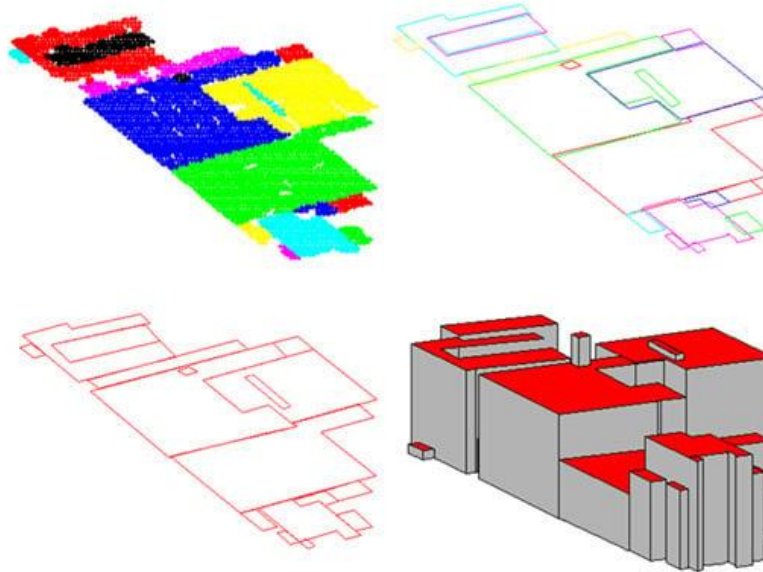


Learning outcomes

- At the end of this module, the participant is expected to be able to
 - Combine 3D geospatial data having different geometry types
 - Interpret different Level of Details (LODs)

The objective is to combine and visualise different data sources

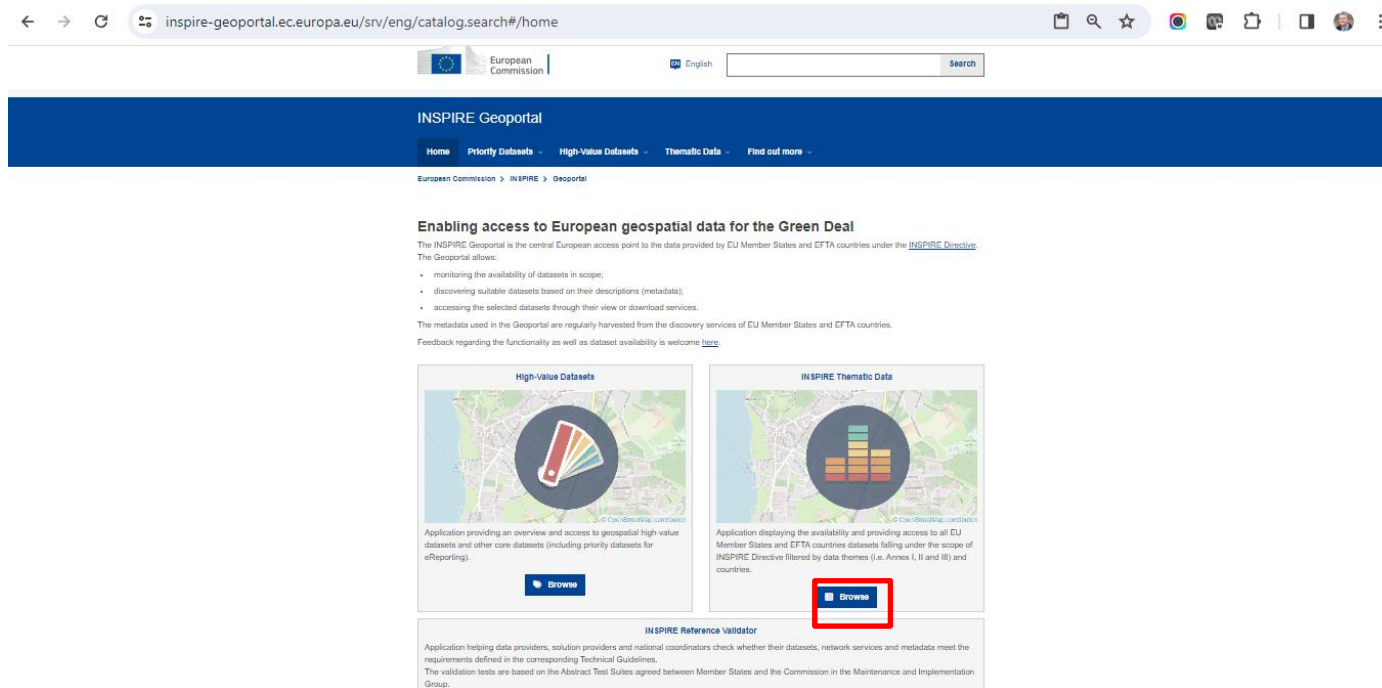
- Different geometries and different LODs (i.e. LOD0 and LOD1)



- Data Sources
 - WMS, WFS, ATOM-Feed, APIs
 - Interoperability
 - Spatial data interoperability is the ability of different systems, formats, and standards to exchange and use spatial data effectively



- Data Sources (1)



The screenshot shows the INSPIRE Geoportal website. The browser address bar displays the URL: `inspire-geoportal.ec.europa.eu/srv/eng/catalog.search#/home`. The website header includes the European Commission logo, a language selector set to "English", and a search bar. Below the header, a blue navigation bar contains the following links: Home, Priority Datasets, High-Value Datasets, Thematic Data, and Find out more. The main content area is titled "INSPIRE Geoportal" and features a section titled "Enabling access to European geospatial data for the Green Deal". This section explains that the INSPIRE Geoportal is the central European access point to data provided by EU Member States and EFTA countries under the INSPIRE Directive. It lists the following capabilities:

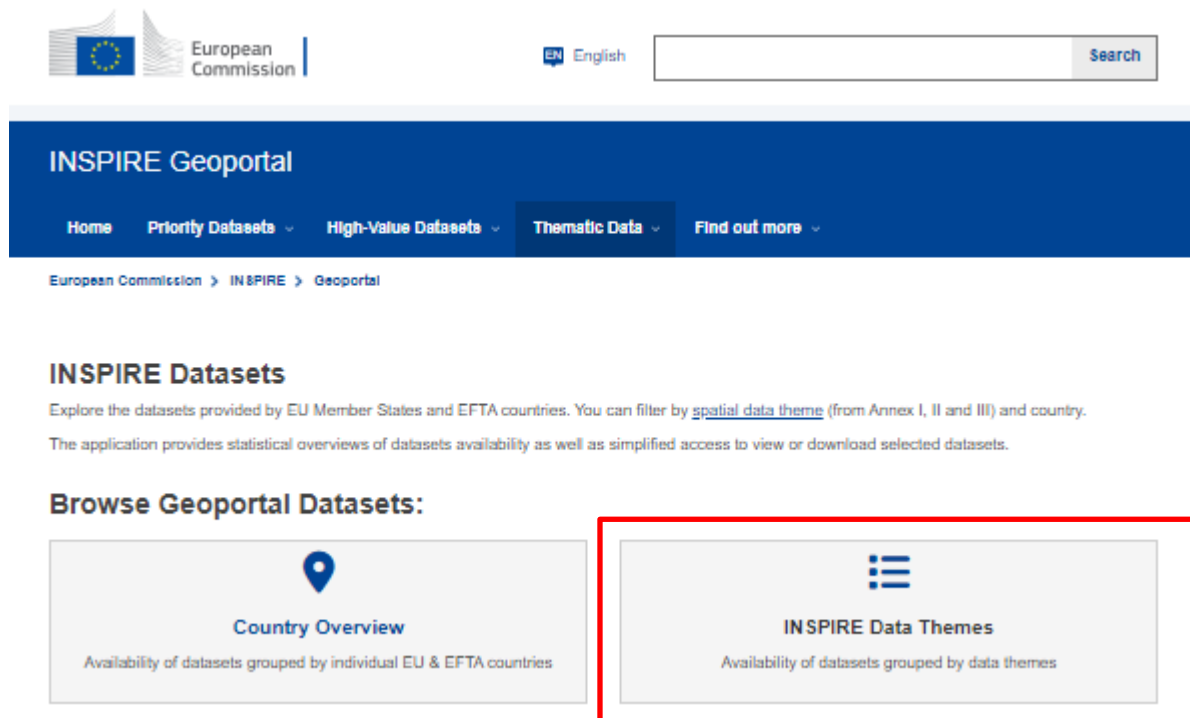
- monitoring the availability of datasets in scope;
- discovering suitable datasets based on their descriptions (metadata);
- accessing the selected datasets through their view or download services.

The metadata used in the Geoportal are regularly harvested from the discovery services of EU Member States and EFTA countries. Feedback regarding the functionality as well as dataset availability is welcome [here](#).

Below this text, there are three main sections, each with a map background and a circular icon:

- High-Value Datasets**: Application providing an overview and access to geospatial high value datasets and other core datasets (including priority datasets for eReporting). Includes a "Browse" button.
- INSPIRE Thematic Data**: Application displaying the availability and providing access to all EU Member States and EFTA countries datasets falling under the scope of INSPIRE Directive filtered by data themes (i.e. Annex I, II and III) and countries. Includes a "Browse" button, which is highlighted with a red rectangle in the image.
- INSPIRE Reference Validator**: Application helping data providers, solution providers and national coordinators check whether their datasets, network services and metadata meet the requirements defined in the corresponding Technical Guidelines. The validation tests are based on the Abstract Test Suites agreed between Member States and the Commission in the Maintenance and Implementation Group.

- Data Sources (1)



The screenshot shows the INSPIRE Geoportal website. At the top, there is a header with the European Commission logo, a language selector set to 'EN English', and a search bar. Below the header is a blue navigation bar with the title 'INSPIRE Geoportal' and several menu items: 'Home', 'Priority Datasets', 'High-Value Datasets', 'Thematic Data', and 'Find out more'. A breadcrumb trail below the navigation bar reads 'European Commission > INSPIRE > Geoportal'. The main content area is titled 'INSPIRE Datasets' and includes a paragraph explaining that users can explore datasets provided by EU Member States and EFTA countries, filtered by spatial data theme and country. It also mentions that the application provides statistical overviews and simplified access to view or download datasets. Under the heading 'Browse Geoportal Datasets:', there are two large, light gray rectangular buttons. The left button, labeled 'Country Overview' with a location pin icon, describes the availability of datasets grouped by individual EU & EFTA countries. The right button, labeled 'INSPIRE Data Themes' with a list icon, describes the availability of datasets grouped by data themes. This right button is highlighted with a red rectangular border.

European Commission | [EN English](#) [Search](#)

INSPIRE Geoportal

[Home](#) [Priority Datasets](#) [High-Value Datasets](#) [Thematic Data](#) [Find out more](#)


[European Commission](#) > [INSPIRE](#) > [Geoportal](#)

INSPIRE Datasets

Explore the datasets provided by EU Member States and EFTA countries. You can filter by [spatial data theme](#) (from Annex I, II and III) and country.


The application provides statistical overviews of datasets availability as well as simplified access to view or download selected datasets.

Browse Geoportal Datasets:



Country Overview

Availability of datasets grouped by individual EU & EFTA countries



INSPIRE Data Themes






Availability of datasets grouped by data themes

- Data Sources (1)

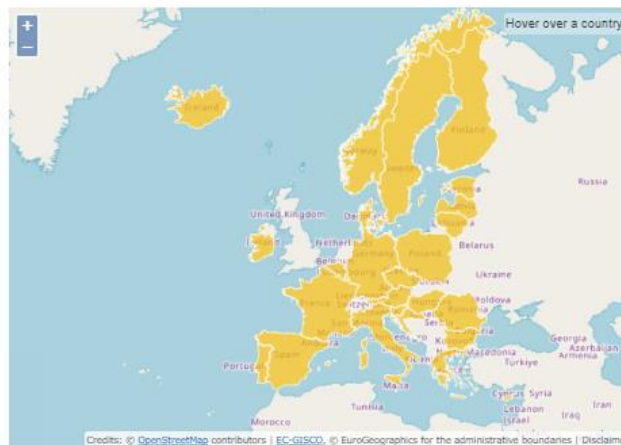
INSPIRE Data Themes

Explore all Member States' datasets by selecting a data theme.

Annex I

 Addresses Def: <i>Location of properties based on address identifiers,...</i> 186 86 83	 Administrative units Def: <i>Units of administration, dividing areas where Member...</i> 613 108 211	 Cadastral parcels Def: <i>Areas defined by cadastral registers or equivalent....</i> 196 52 54	 Geographical grid systems Def: <i>Harmonised multi-resolution grid with a common point...</i> 127 12 11
 Geographical names Def: <i>Names of areas, regions, localities, cities, suburbs,...</i>	 Hydrography Def: <i>Hydrographic elements, including marine areas and all...</i>	 Protected sites Def: <i>Area designated or managed within a framework of international...</i>	 Coordinate reference systems Def: <i>Systems for uniquely referencing spatial information...</i>

- Data Sources (1)



Geoportal Dataset Statistics

 **196**
Metadata records

 **52**
Downloadable Datasets



 **54**
Viewable Datasets

Spatial scope coverage:

- ☐ National
☐ Regional

Select a country

Austria	5 4 2	Greece	1 1 1	Norway	3 1 3
Belgium	1 0 1	Hungary	1 1 1	Poland	1 0 1
Bulgaria	1 0 0	Iceland	2 0 0	Portugal	3 1 1
Croatia	1 0 1	Ireland	2 2 2	Romania	2 1 1
Cyprus	1 1 1	Italy	115 2 3	Slovakia	0 0 0
Czech Republic					
Denmark					
Estonia					
Finland					
France					
Germany					

Title	Properties
Katastarske čestice i katastarske općine INSPIRE	 

- Data Sources (1)

Katastarske čestice i katastarske općine INSPIRE

Metadata

Country:  Croatia

+ Download Options

— View Options

Simple Viewer

Layer name

Service Metadata

Preview Dataset

CP.CadastralParcel

More Details

Preview Dataset

inspire-geoportal.ec.europa.eu says

Copied the url: https://api.uredjenazemlja.hr/services/inspire/cp_wms/ows?REQUEST=GetMap&SERVICE=WMS&VERSION=1.3.0&LAYERS=CP.CadastralZoning&FORMAT=image/png&CRS=EPSG:4326&BBOX=1.5646197848183165,2.302144192592216,2.607699641363861,3.836906987653693&HEIGHT=256&WIDTH=256&STYLES=

More Details

— Dataset Metadata

Resource Title

Katastarske čestice i katastarske općine INSPIRE

Resource Abstract

This is WMS URL

OK

Tags

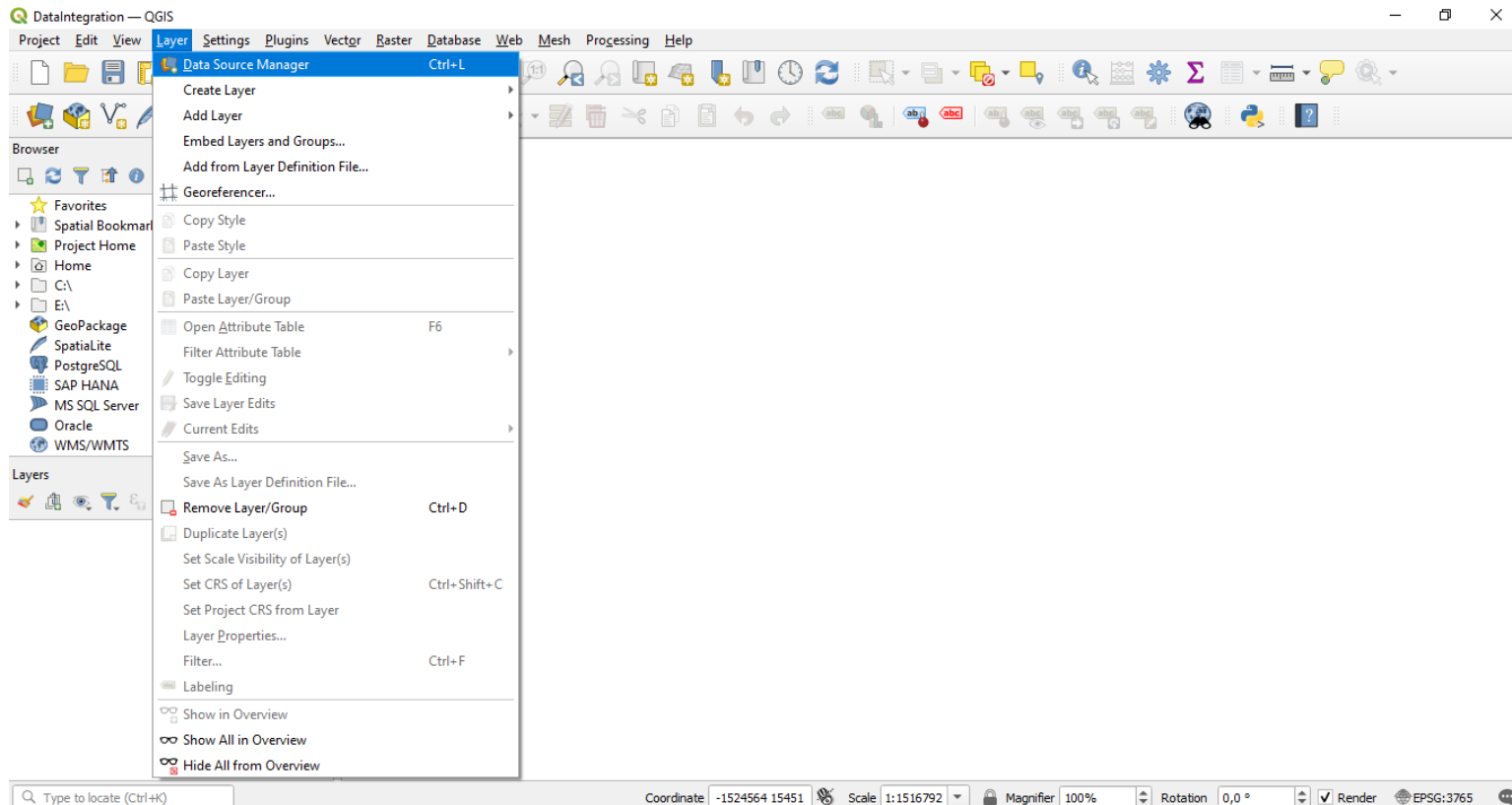
Priority Dataset

Spatial Scope

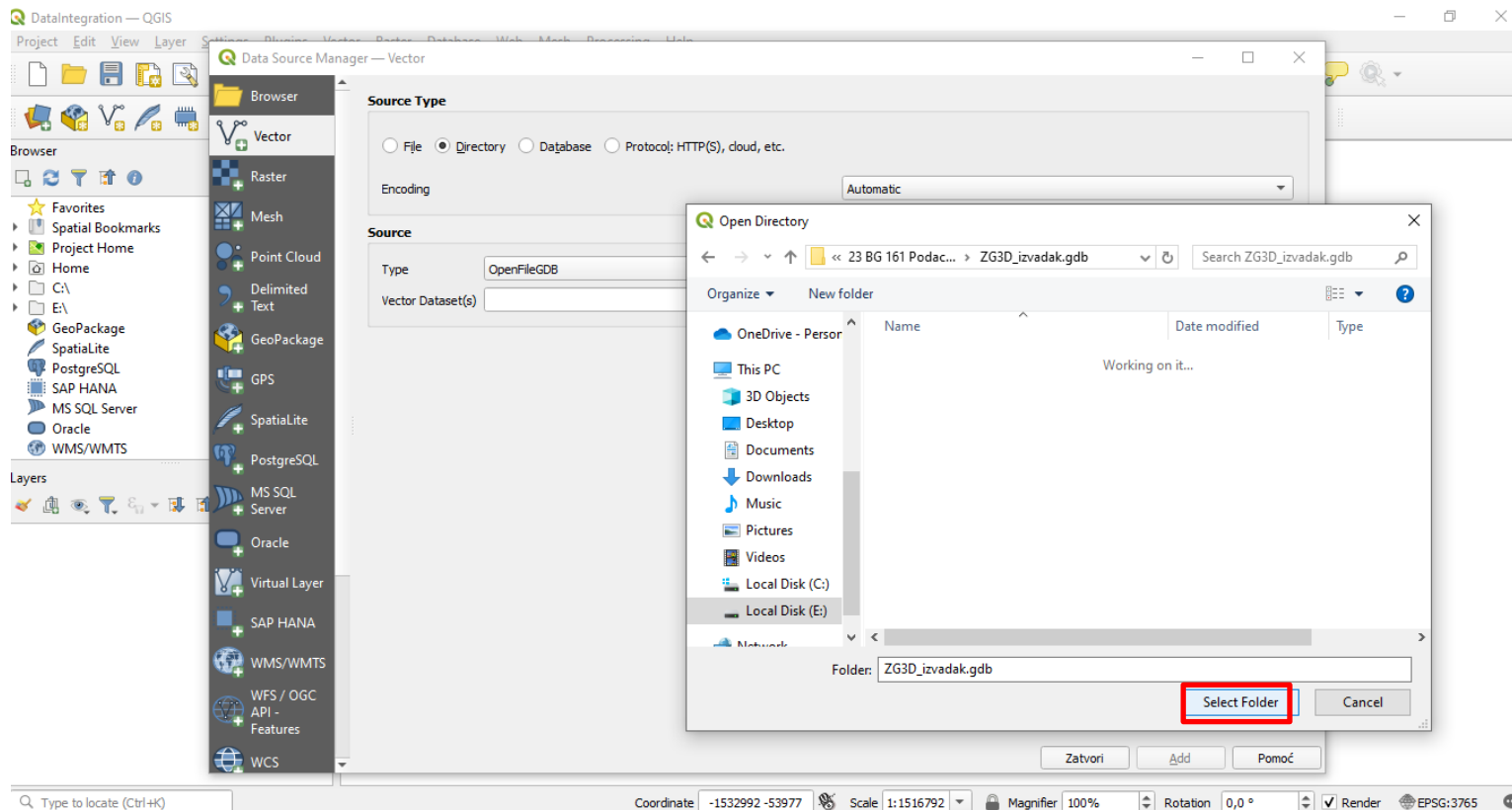
- Data Sources (2)
 - 3D City of Zagreb (part of the city)



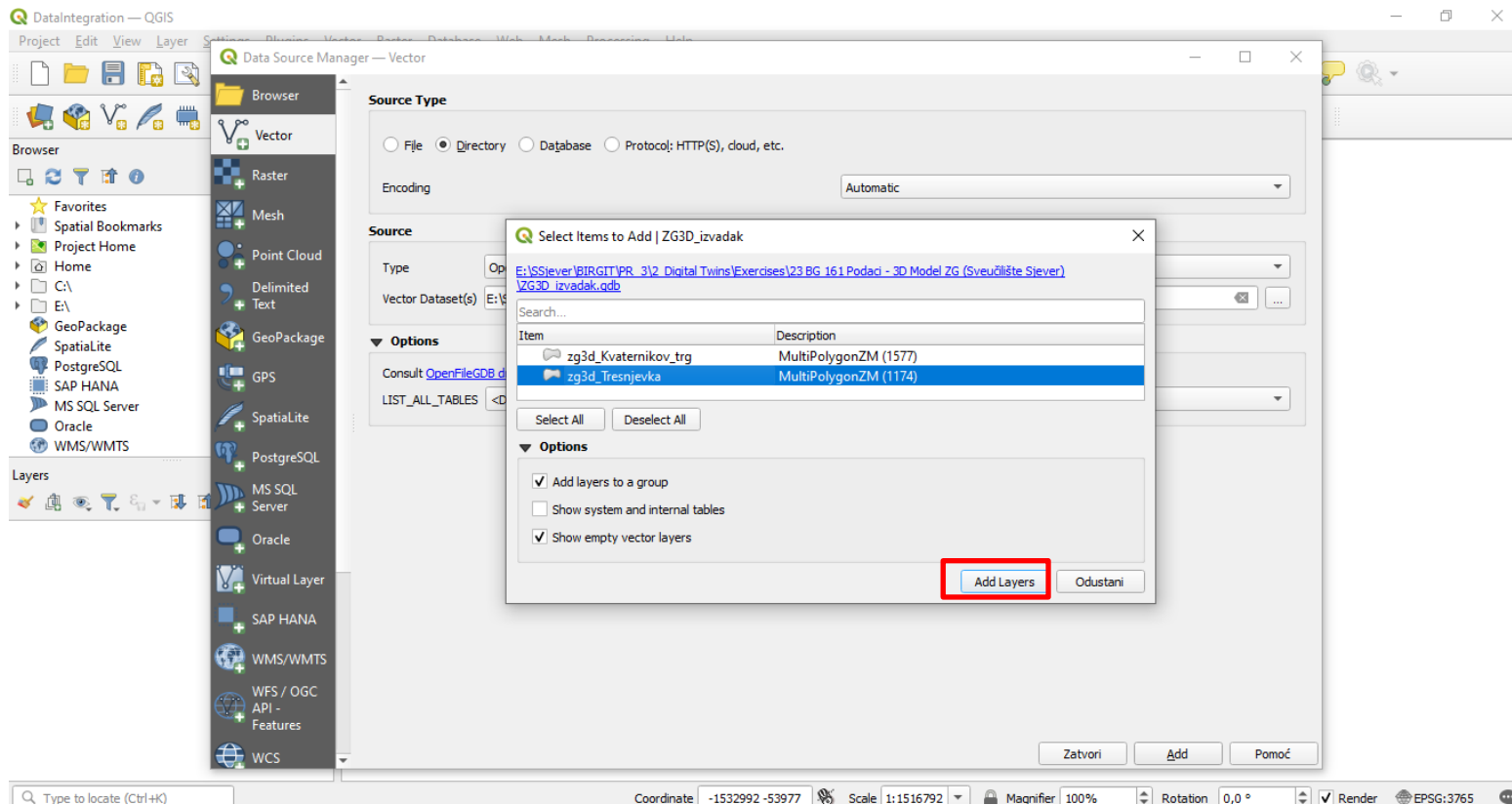
- Data Integration (QGIS)



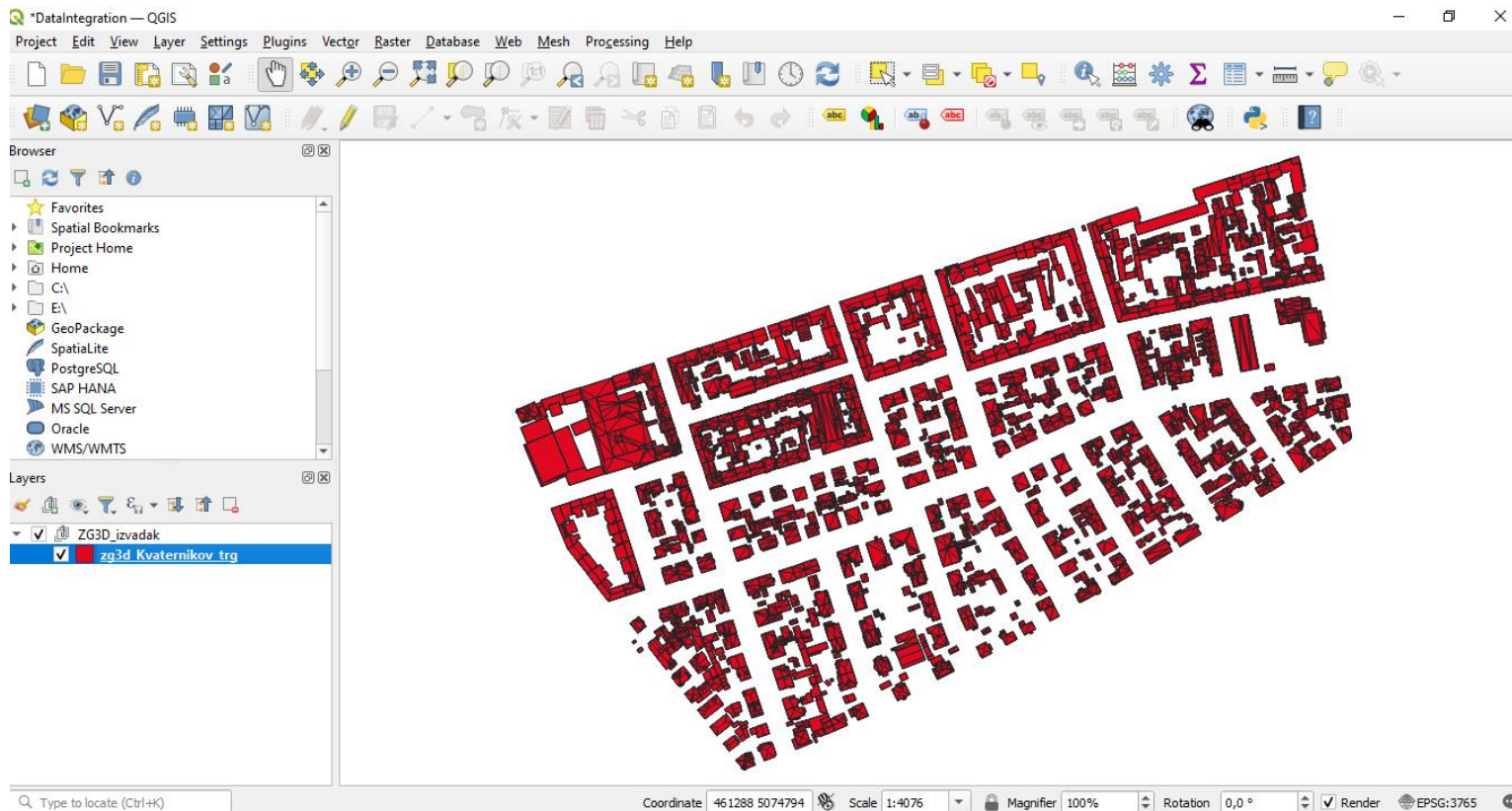
- Data Integration (QGIS)



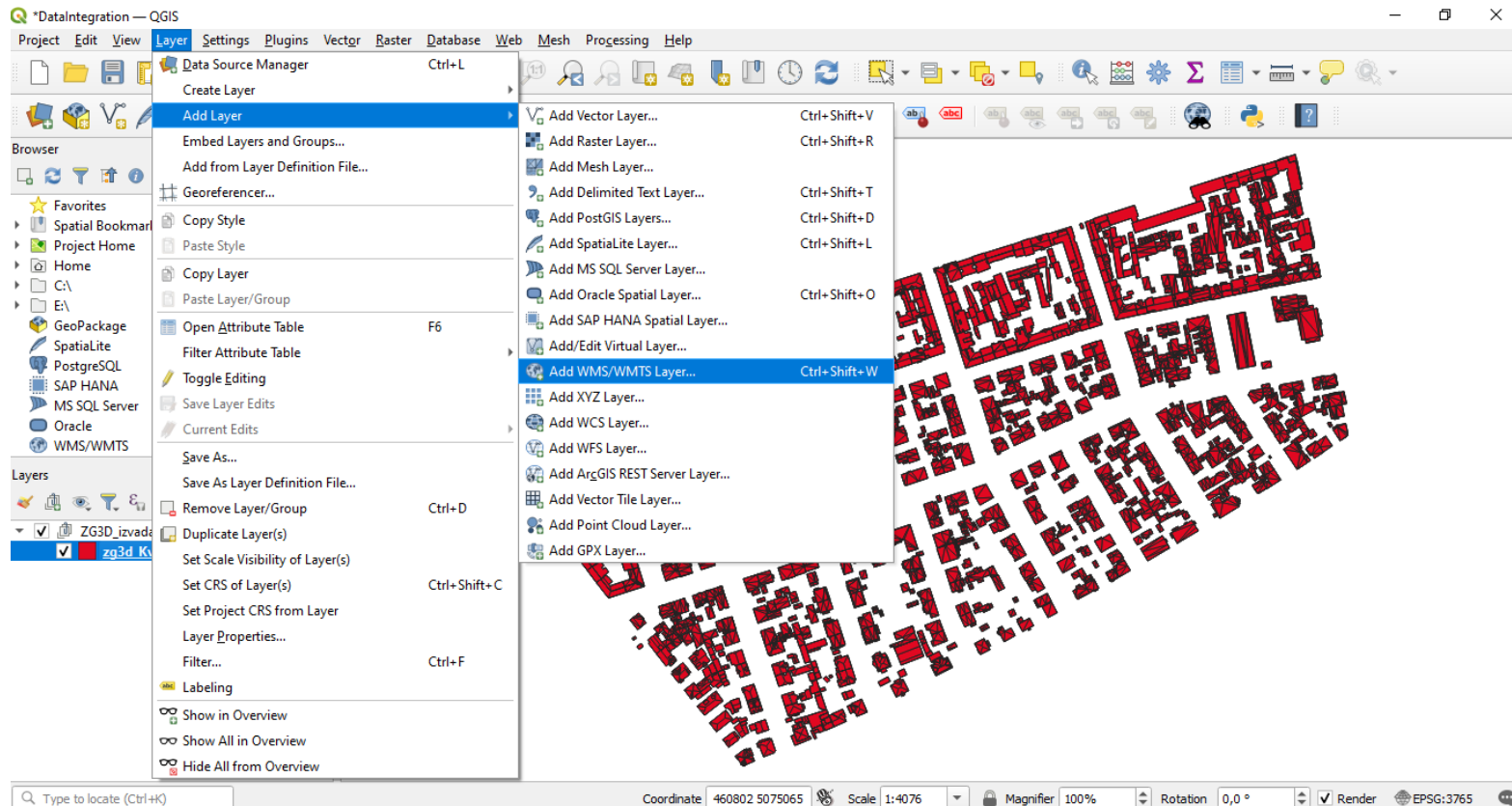
- Data Integration (QGIS)



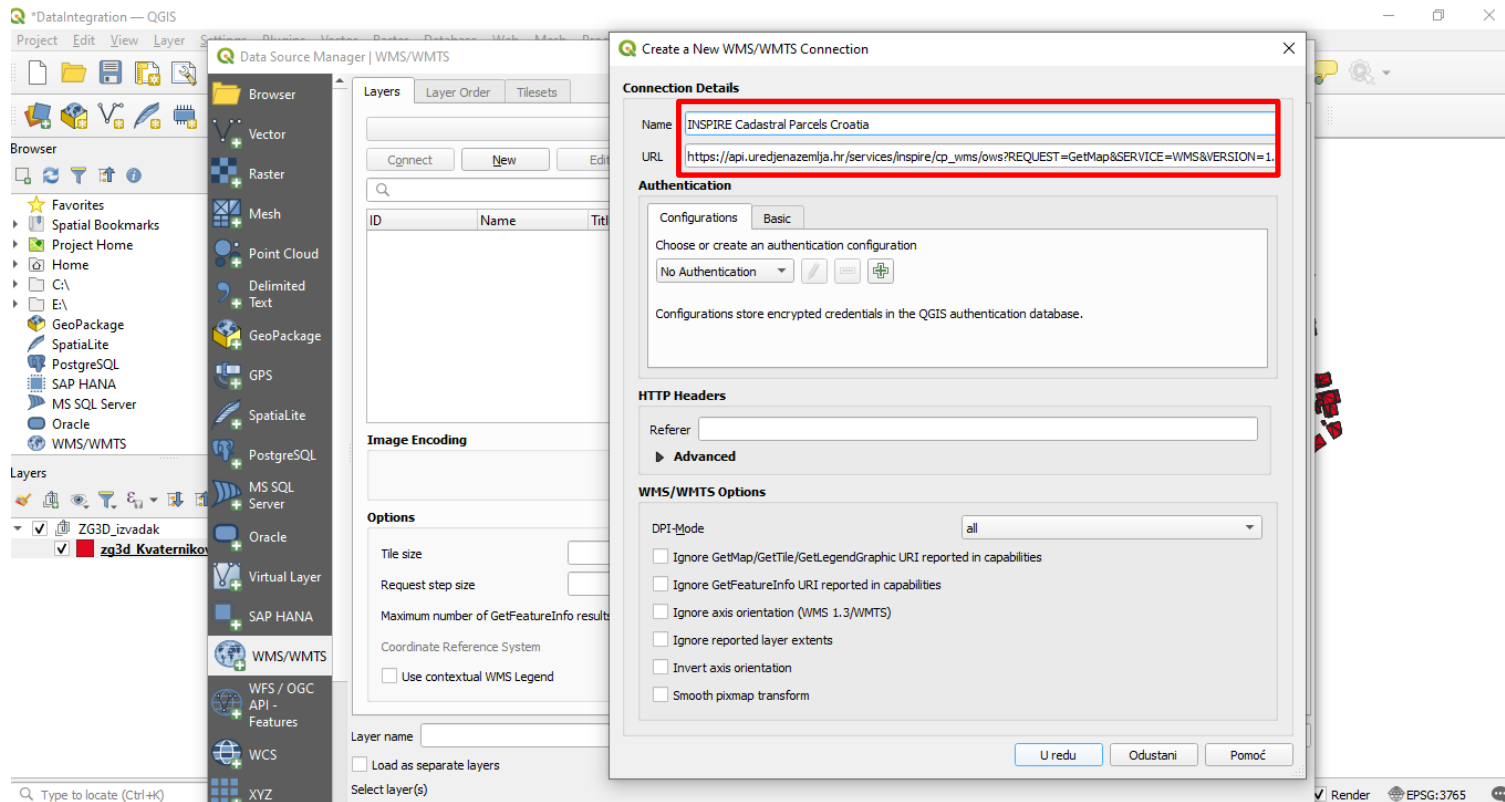
- Data Integration (QGIS)



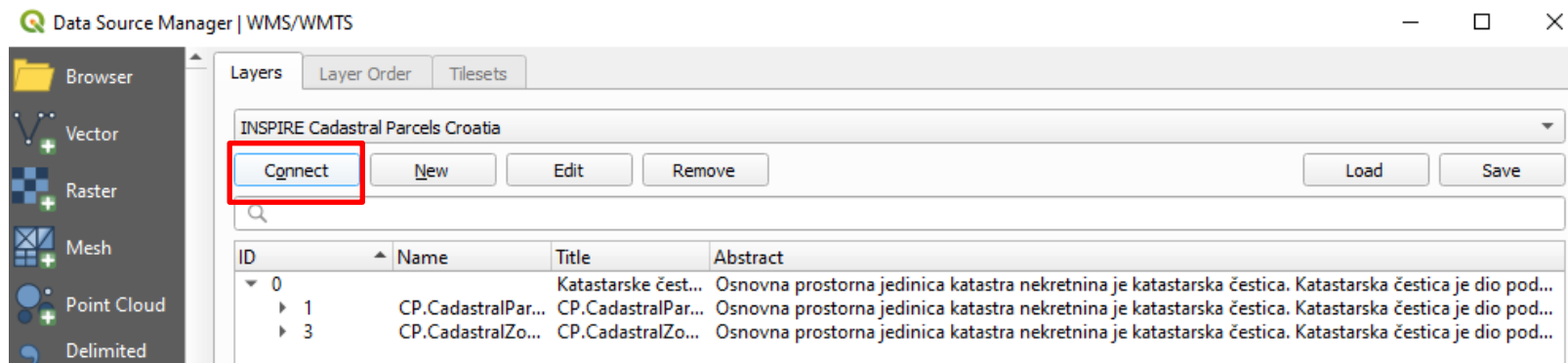
- Data Integration (QGIS)



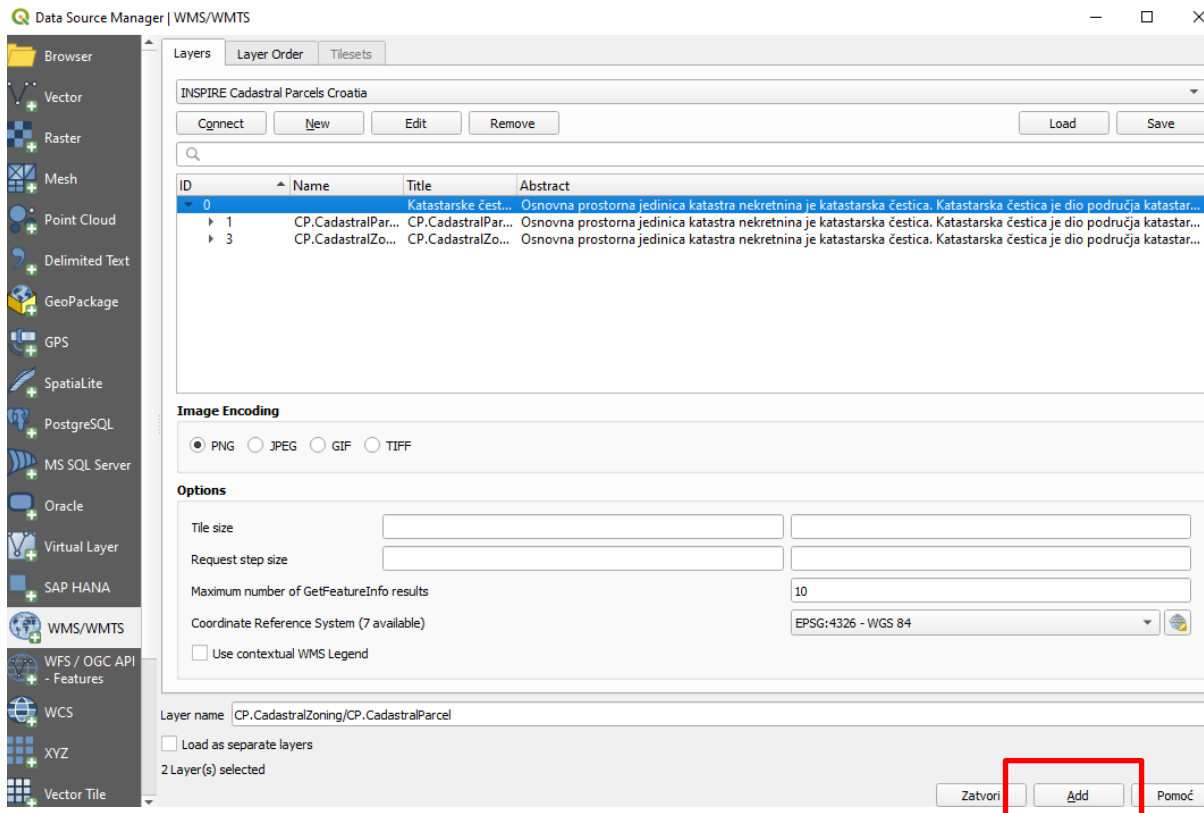
- Data Integration (QGIS)



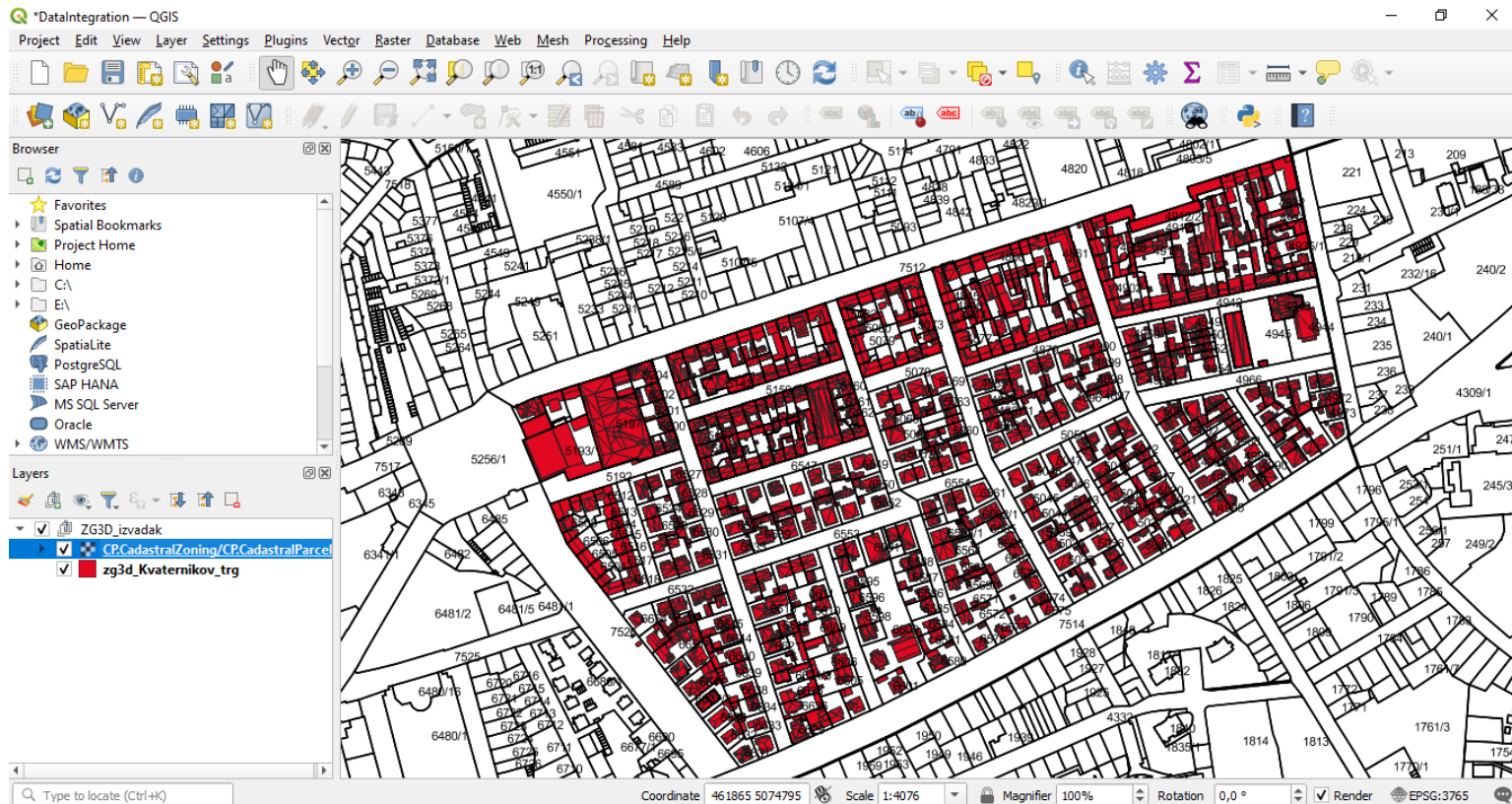
- Data Integration (QGIS)



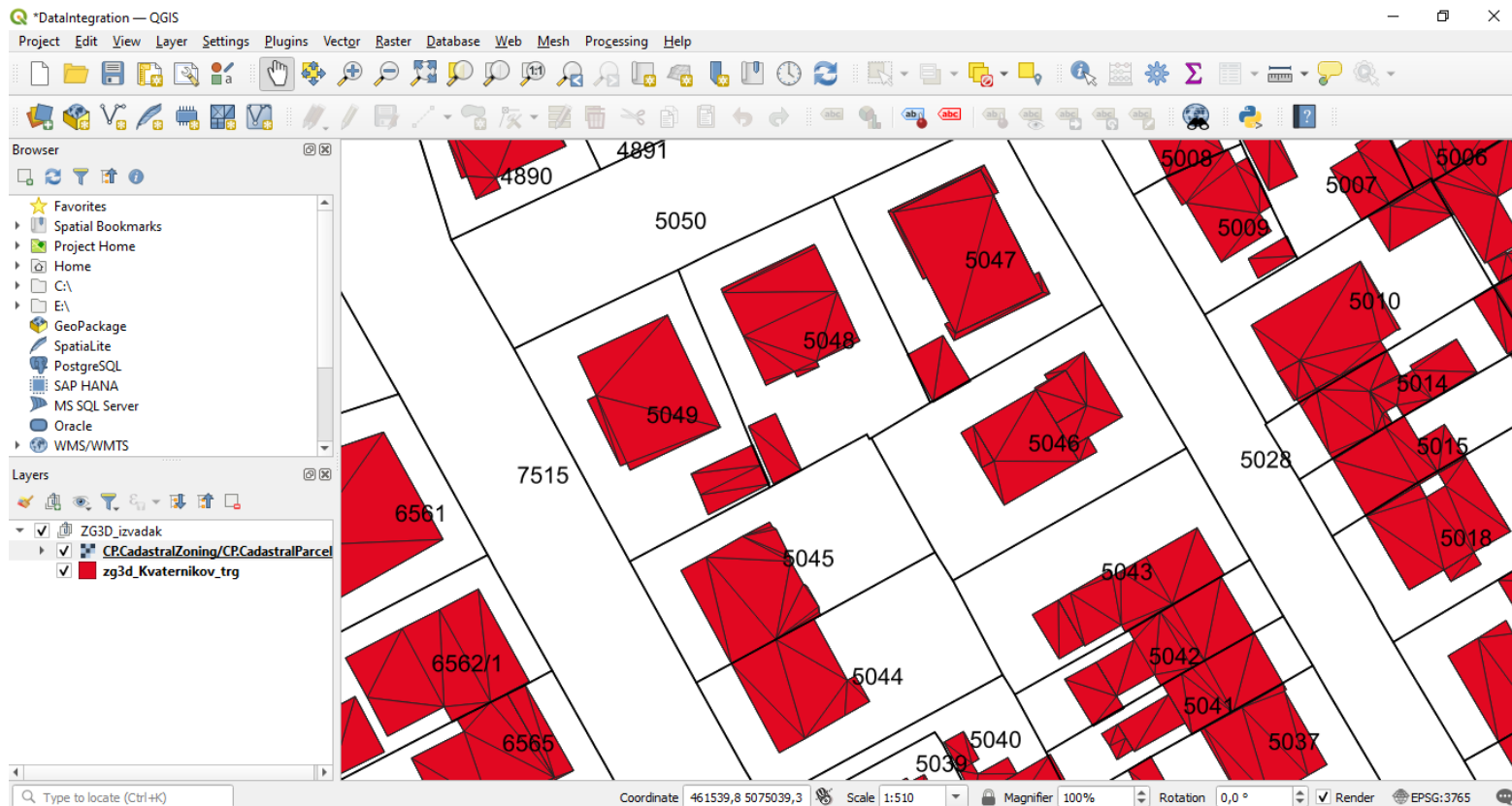
- Data Integration (QGIS)



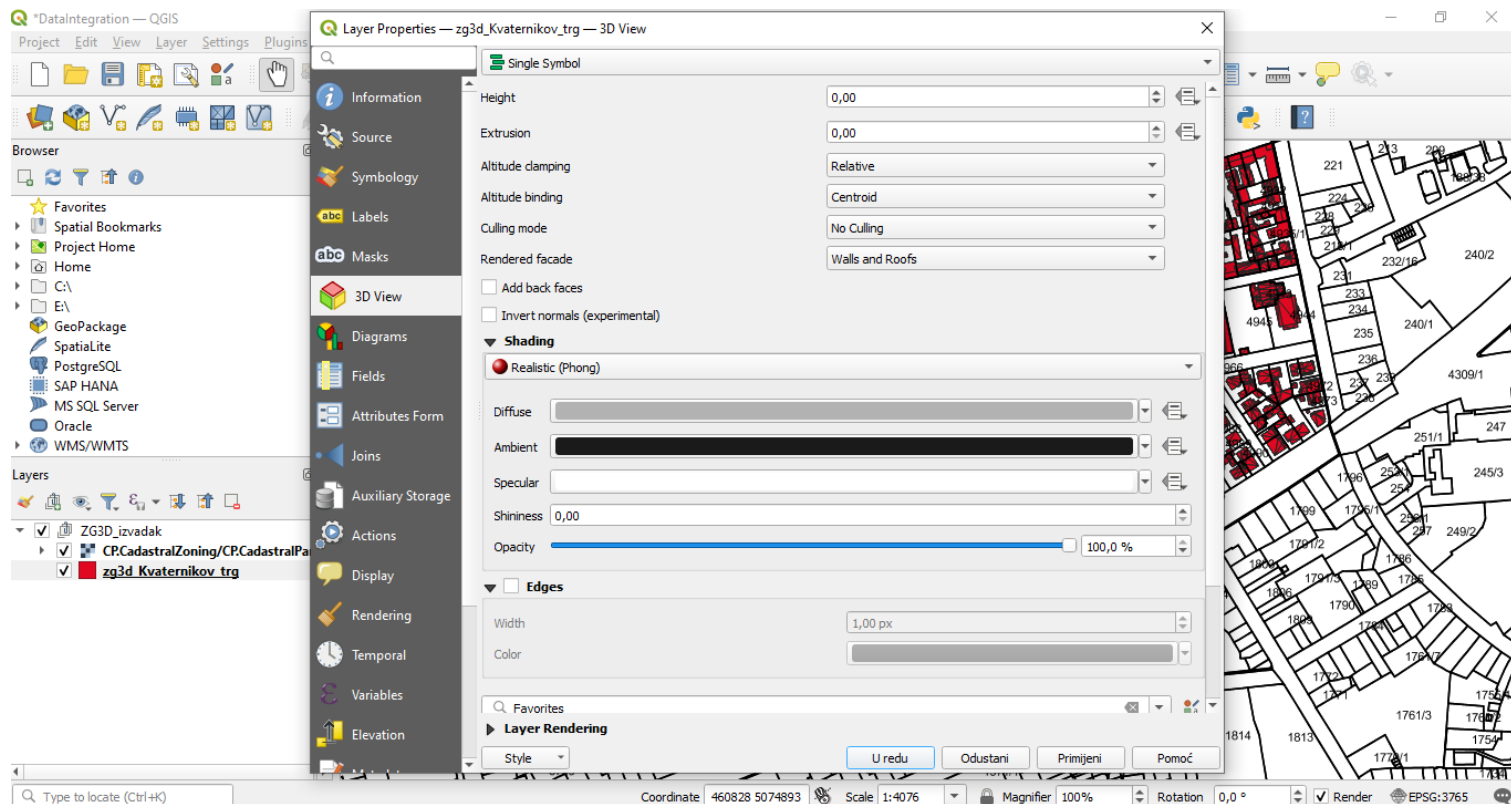
- Data Integration (QGIS)



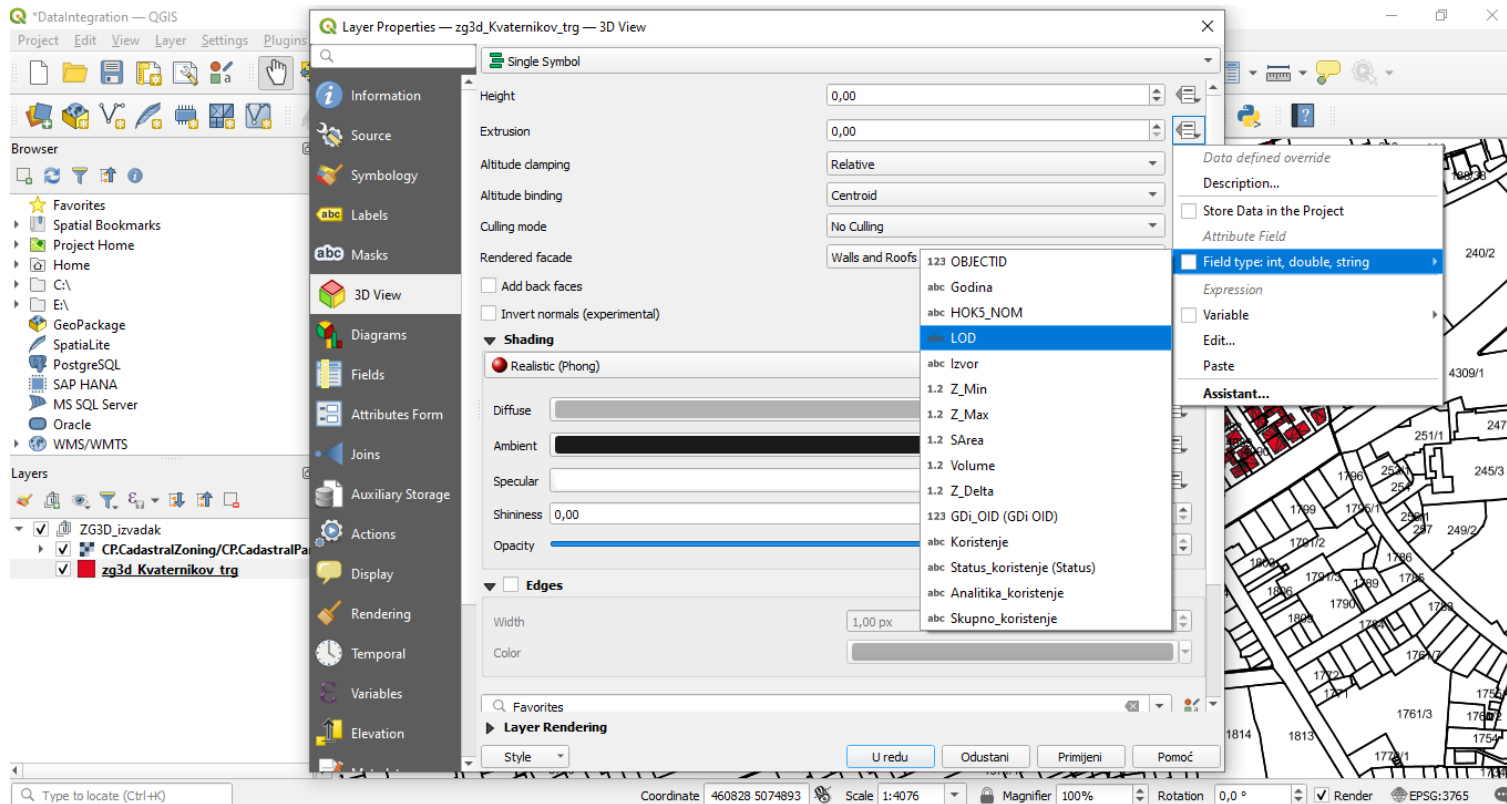
- Data Integration (QGIS)



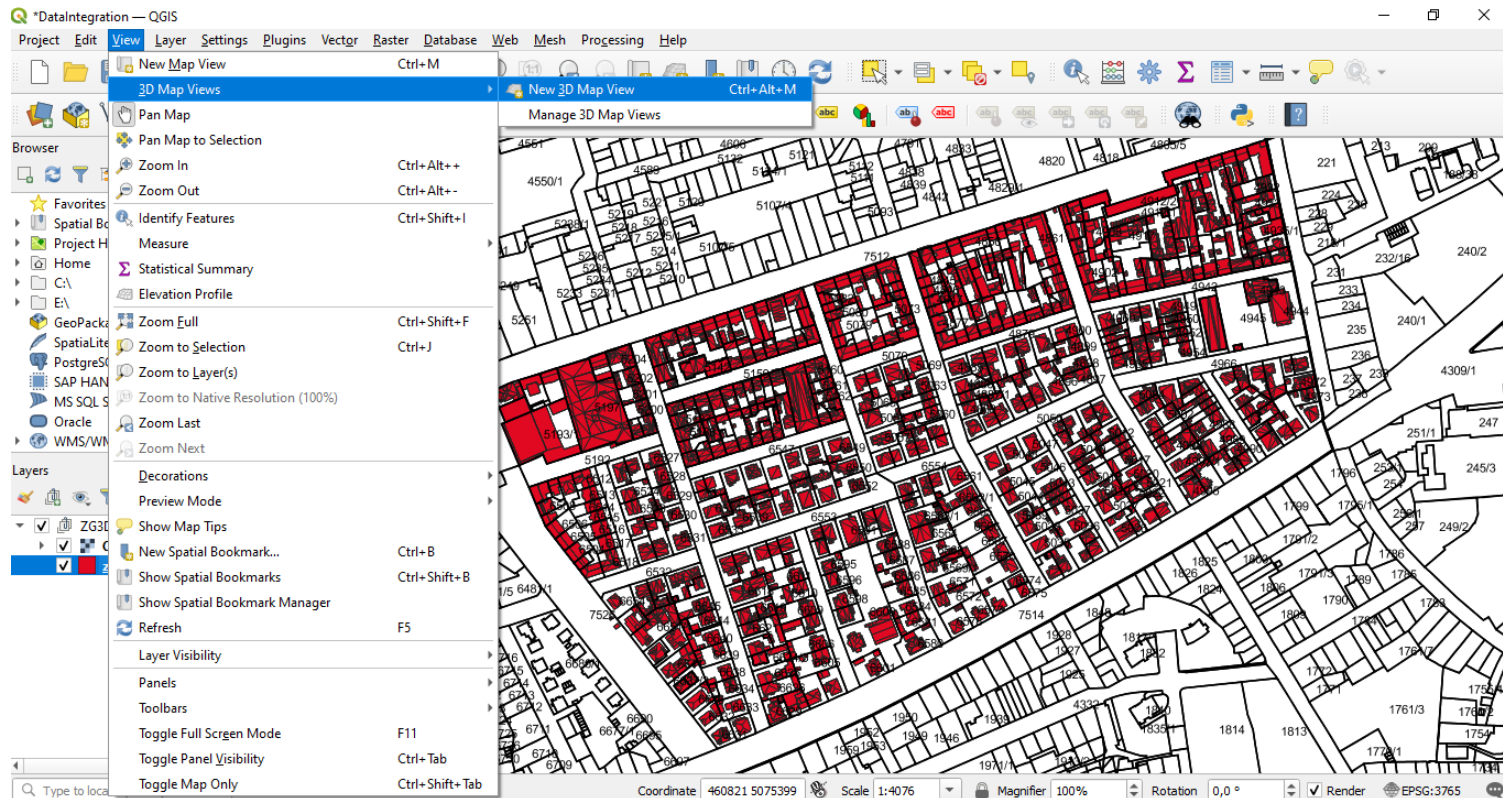
- Data Integration (QGIS)



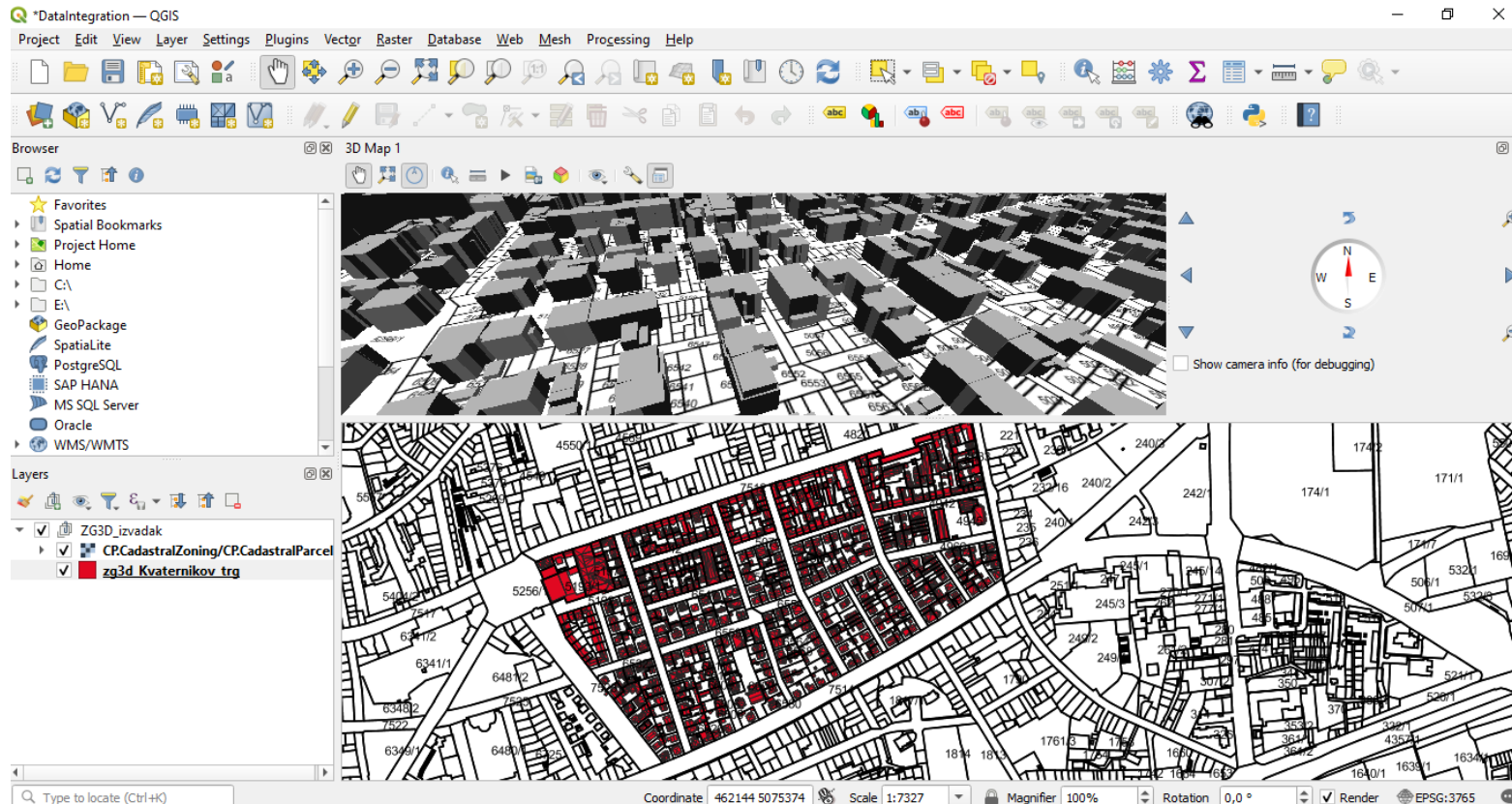
- Data Integration (QGIS)



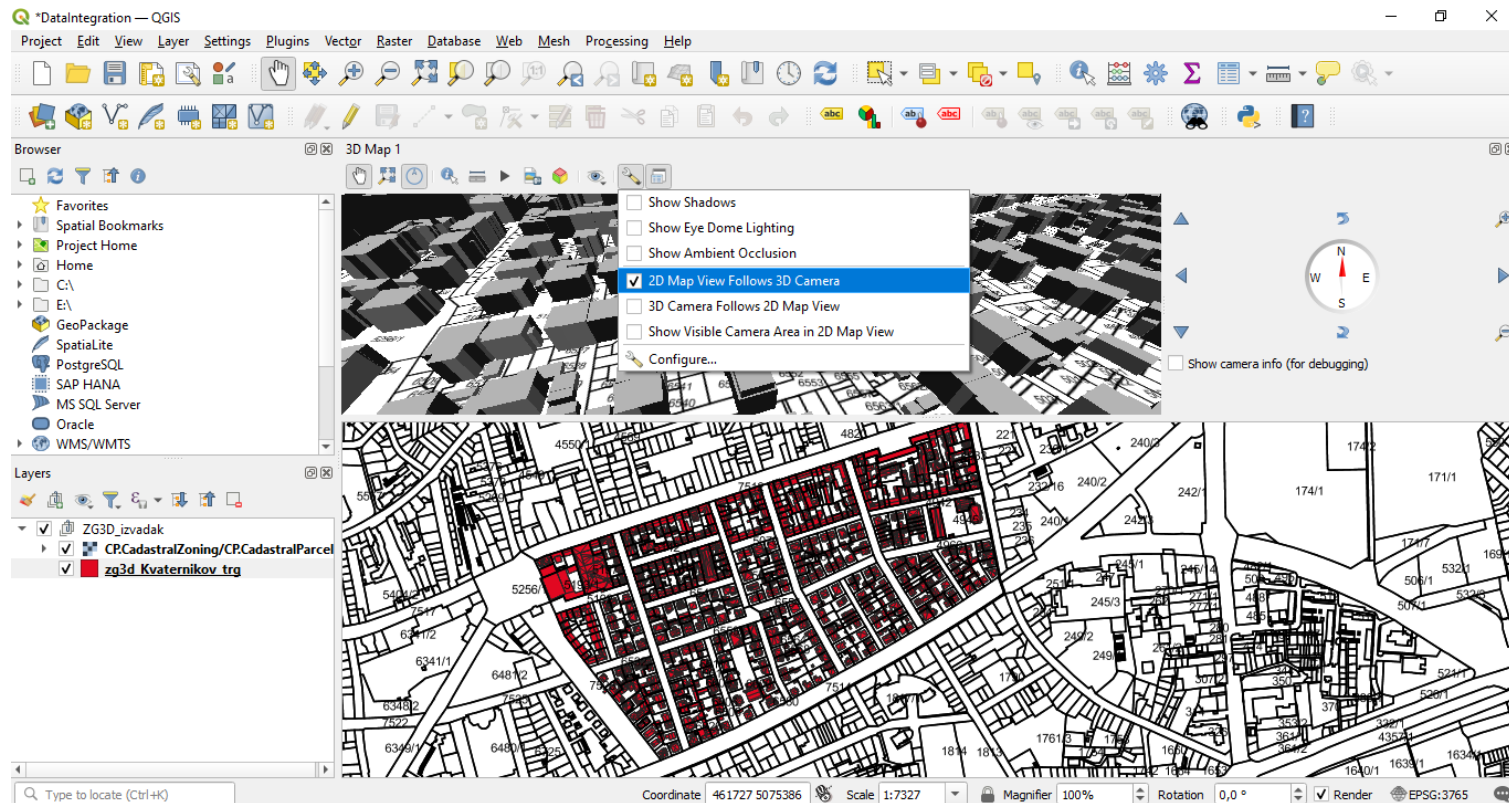
- Data Integration (QGIS)



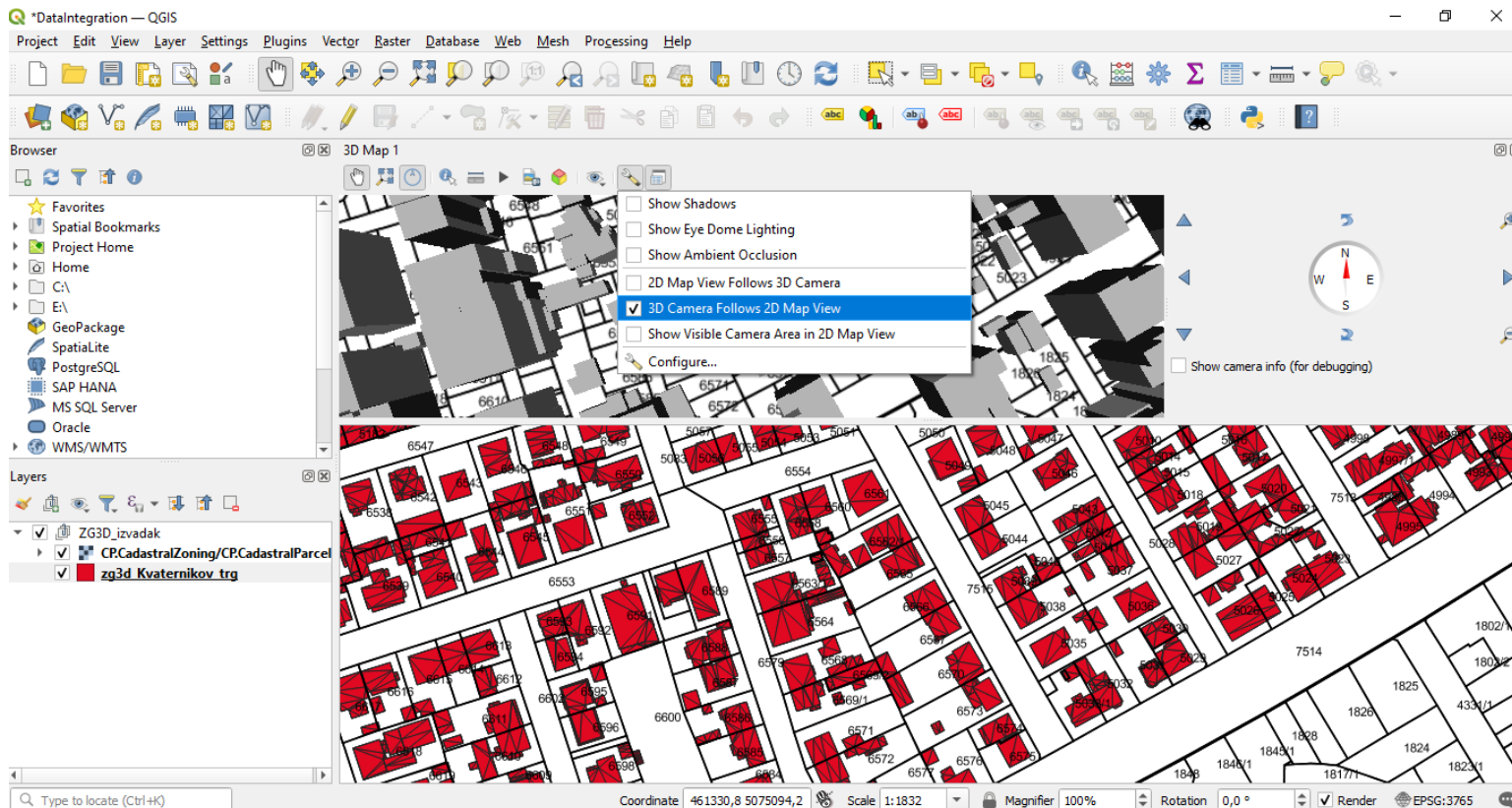
- Data Integration (QGIS)



- Data Integration (QGIS)



- Data Integration (QGIS)



- <https://inspire-geoportal.ec.europa.eu/srv/eng/catalog.search#/home>
- <https://qgis.org/en/site/>
- https://www.mdpi.com/2072-4292/7/6/6710https://arheologijaslovenija.blogspot.com/p/blog-page_81.html

Thank you for your attention

Some logo's and links to web site and social media here



<https://birgitproject.eu/>